

Number:

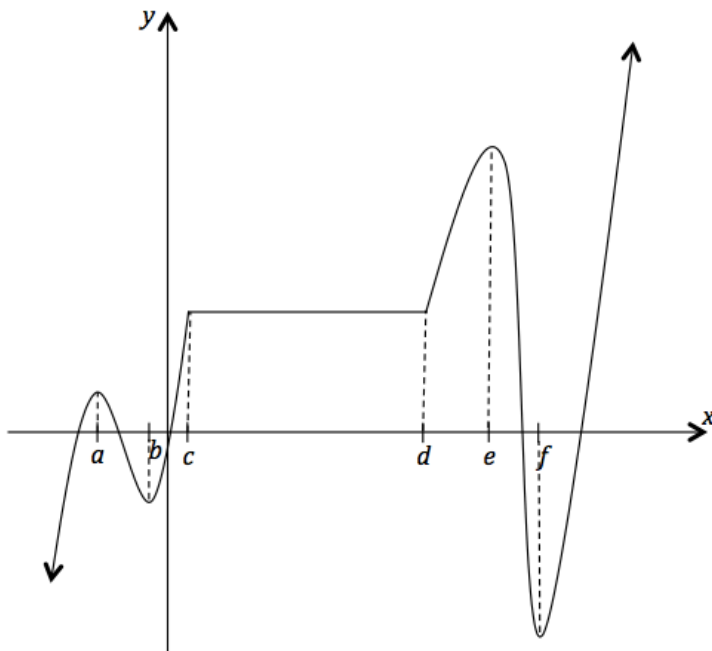
Textbook Section:

Title:

Def: A function f is increasing on an interval I if

Def: A function f is decreasing on an interval I if

Def: A function f is constant on an interval I if



Increasing on

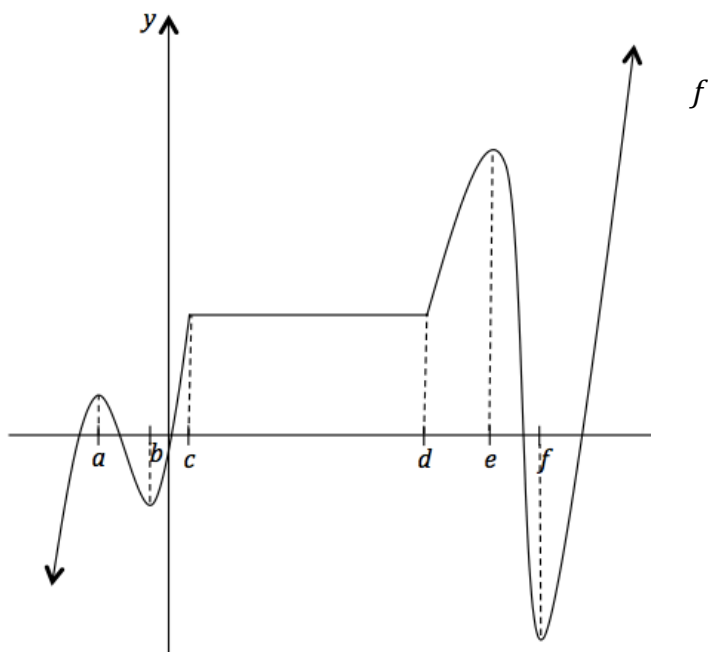
Decreasing on

Constant on

Def: A function f has a local or relative maximum at a if

Def: A function f has a local or relative minimum at a if

Note:



1. Identify where and what the local extrema are.